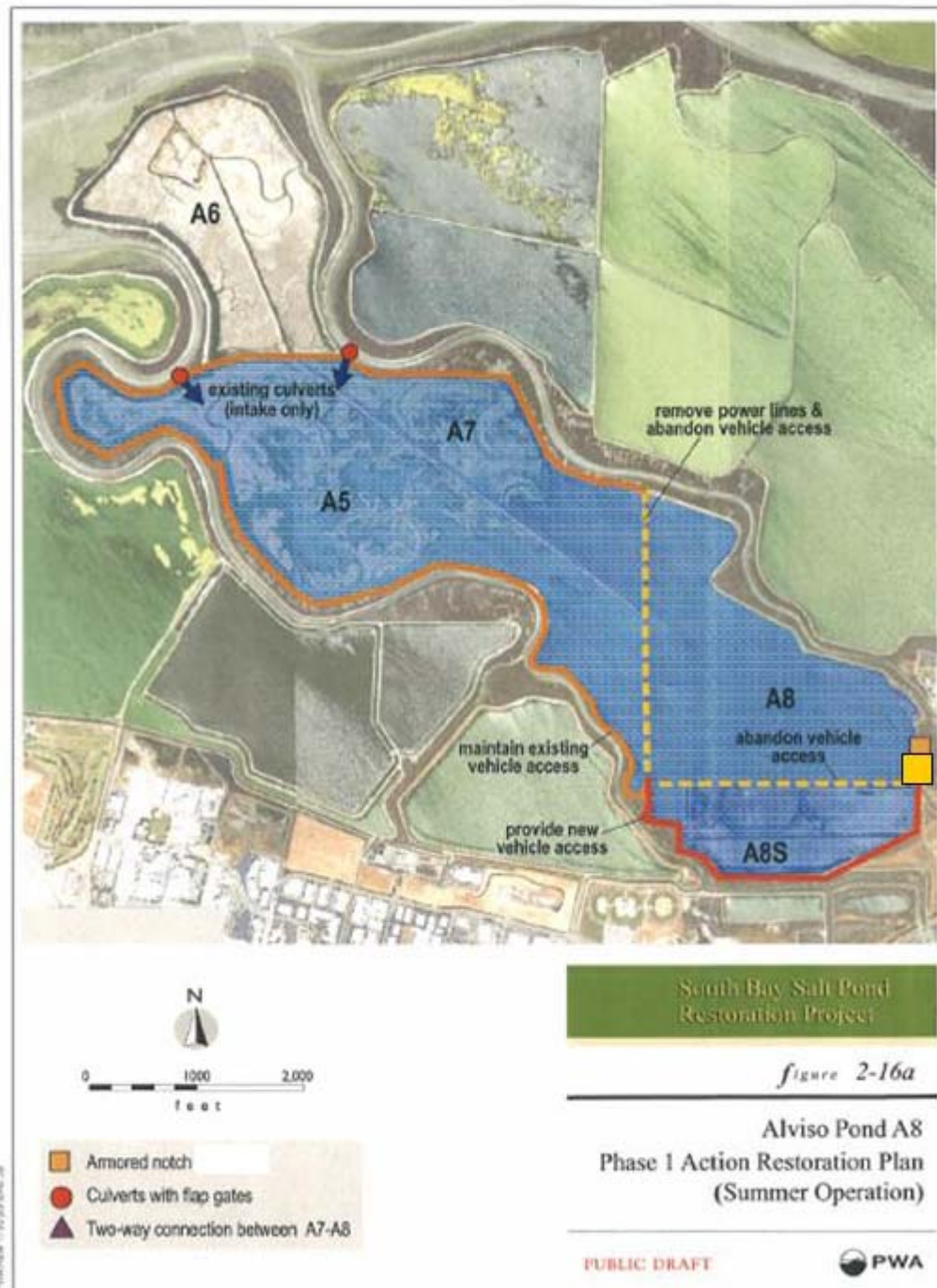


POND A8 APPLIED STUDY
Draft June 5, 2007



Restoration Area: 400 acres (Pond A8) plus 1,000 acres (Ponds A5 & A7)
 Width of notch: 40 feet, divided into bays
 Public Access: None
 Estimated Cost (construction & adaptive management): \$1.5 million
 Issues: Mercury, Preservation of Pond A12 levee
 Applied Studies Questions: 1) will tidal habitat restoration and associated channel scour increase methylmercury levels in marsh and bay-associated sentinel species, and 2) will sediment movement into ponds reduce shallow water habitat or ecological function in the South Bay?